

Jefferson County Historic Landmarks Commission

Landmarks Nomination Report: *The Shirley Farm or Locust Grove*

Physical Description:

The Shirley Farm, known also as Locust Grove, is located on the west side of Shirley Road, near Summit Point, West Virginia. The farm consists of agricultural fields, stone fences and historic buildings set back from the public road. Together with its neighboring agricultural properties, Locust Grove forms an expansive cultural landscape of rural agriculture in the lower Shenandoah Valley.

Historic Description:

Originally part of Abraham Davenport's Mount Ellen lands, Locust Grove was sold to William B. Willis. Willis built a stucco covered stone house in the 1840s. Soon after completion, the house suffered a terrible fire. Most of the floors and millwork were destroyed and Willis sold the property. Robert Shirley bought the farm in 1848 at auction and rebuilt the interior of the house. The property has been farmed by Shirley family ever since.

Historic Resources:

Locust Grove has numerous historic buildings. The house is a two-story, stone house on a raised English basement. The front of the house has a wide stair to the ornamental paired entry with side lights and transom. A hipped roof with dormers and a deep, molded brick soffit top the house. The interior plan of the house is transverse hall with fine stair millwork. One unique mantel survives from before the fire. This unusual piece has a hipped frieze with federal style center and end blocks. Many of the doors have decorative grain painting. In addition, faux-marble baseboards can be found in the parlor. Overall the house has exceptional detailing and historic continuity. In addition to the house, the farm has a log summer kitchen, log smokehouse, frame corn crib and frame tenant house. The entry drive is lined on both sides with dry-stacked limestone walls.

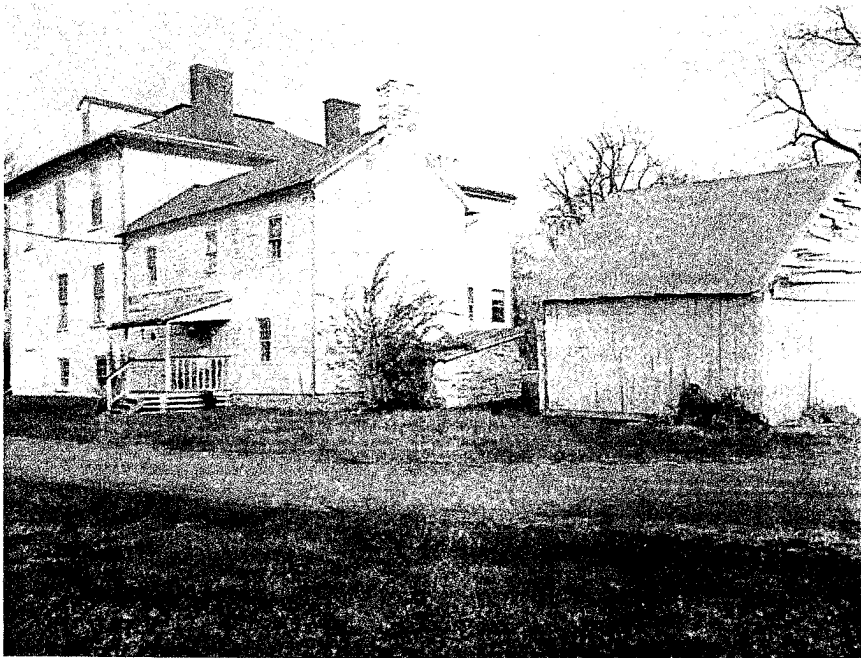
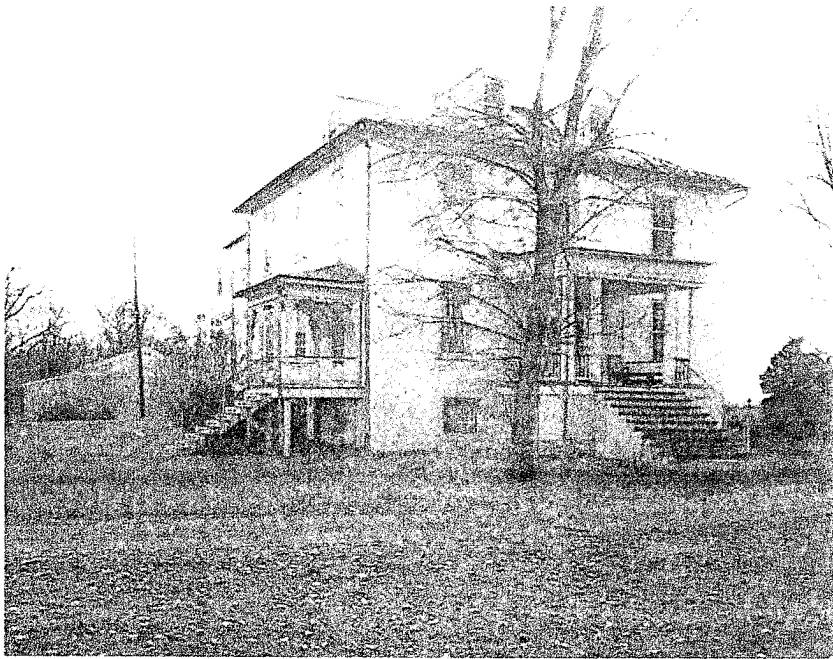
Nomination Criteria:

The JCHLC nominates this property under Criteria C for inclusion on the list of registered county landmarks. Criteria C states that a site may be nominated if, in the opinion of the JCHLC, it embodies the distinctive characteristics of a type, period, or method of construction, or that represent the work of a master, or that possess high artistic values. Owners, John & Carmen Creamer, have agreed to have the property listed as Jefferson County Historic Landmark.

Nomination Action:

The JCHLC voted unanimously, with one abstaining, to add Locust Grove, under Criteria C, to the rolls of registered Jefferson County Historic Landmarks on September 20, 2007. The abstaining member, Carmen Creamer, lives at Locust Grove.

Locust Grove: The Shirley Farm



Shirley farm Corn Crib

