

Jefferson County Historic Landmarks Commission

Landmarks Nomination Report: *Hendricks Farm*

Physical Description:

The Hendricks Farm property is located on the east side of the Shepherdstown Pike, Route 230, north of the community of Uvilla in Jefferson County, West Virginia. The farm consists of rolling agricultural fields and historic buildings near the public road. Together with its neighboring agricultural properties, the Hendricks Farm forms a distinctive cultural landscape of rural agriculture in the lower Shenandoah Valley.

Historic Description:

Deeded in 1754, the Hendricks-Buckles families owned this farm for nearly 250 years, until selling the land to the present owners. The farm was designated a National Bicentennial Farm and has been determined eligible for the National Register of Historic Places by the State Historic Preservation Office.

Historic Resources:

The Hendricks Farm property has numerous historic resources. The main house, an ell shaped brick structure, was built in 1878 by Daniel W. Hendricks. The Hendricks House is an excellent example of Jefferson County's rural Victorian farmhouse type. With detailing such as radius window headers and sash, the builders updated the traditional 5-bay, center entry form to the tastes of the period.

The Swisser-type, bank barn on the farm was constructed in 1880. It is a well preserved example of the local timber framing techniques. In addition to the bank barn, the farm retains its historic smokehouse, hen house, sheep shed, pig house, woodshed, and carriage house. All of these outbuildings are of frame construction.

Nomination Criteria:

The JCHLC nominates this property under Criteria C for inclusion on the list of registered county landmarks. Criteria C states that a site may be nominated if, in the opinion of the JCHLC, it embodies the distinctive characteristics of a type, period, or method of construction, or that represent the work of a master, or possess high artistic values. Owners, Bruce and Anita Fleshman, have agreed to have the property listed as Jefferson County Historic Landmark.

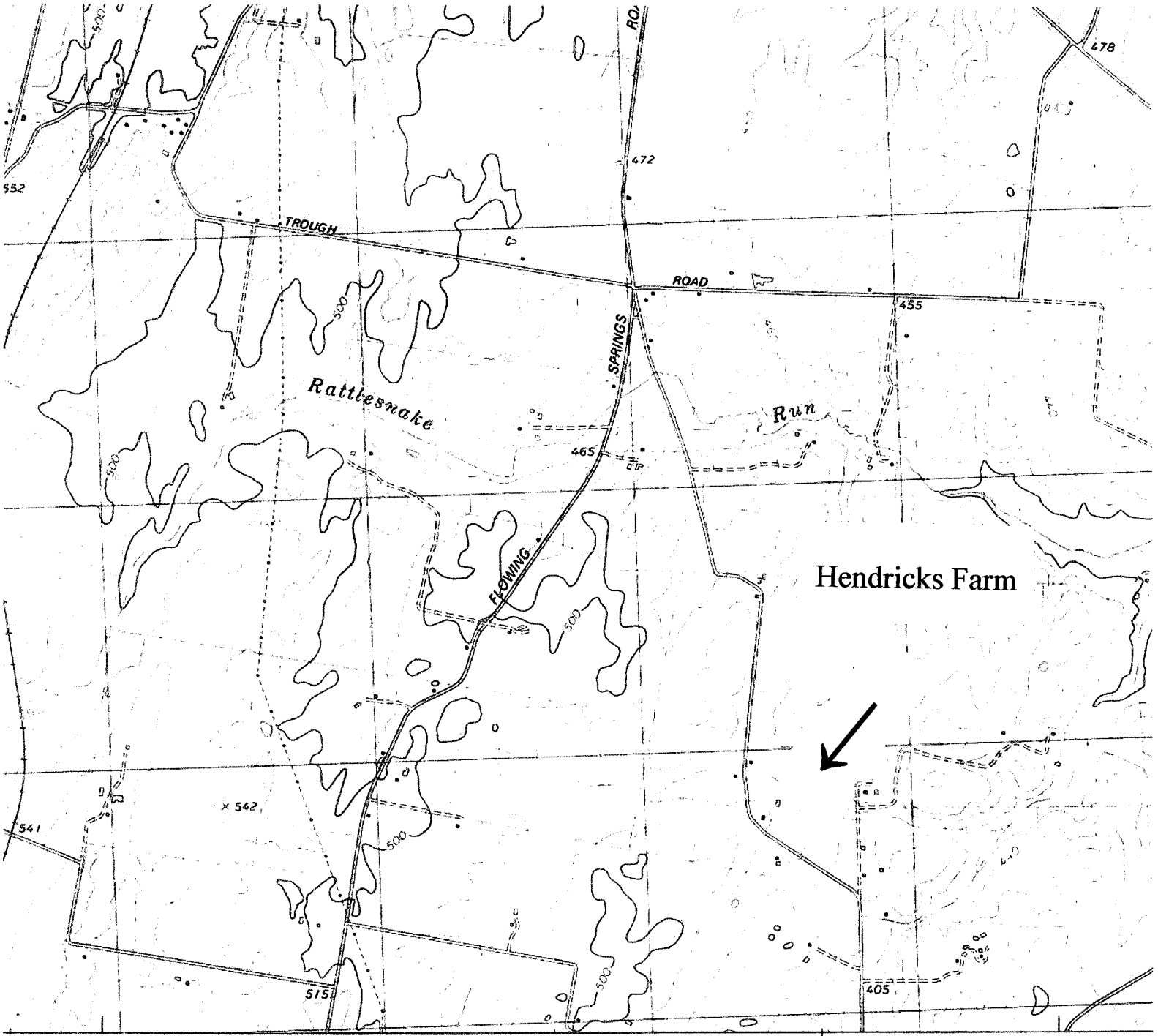
Nomination Action:

The JCHLC voted unanimously to add the Hendricks Farm, under Criteria C, to the rolls of registered Jefferson County Historic Landmarks on May 17, 2007.

Hendricks Farm

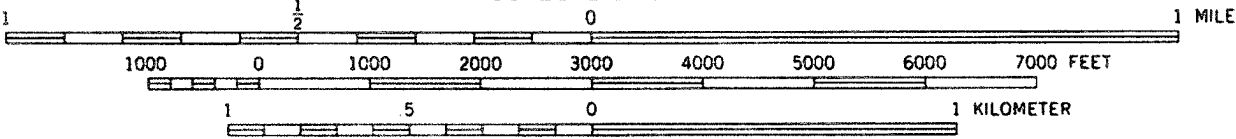






(CHARLES TOWN)
5462 IV SE

SCALE 1:24 000



CONTOUR INTERVAL 20 FEET
NATIONAL GEODETIC VERTICAL DATUM OF 1929
TO CONVERT FROM FEET TO METERS, MULTIPLY BY 0.3048

NORTH